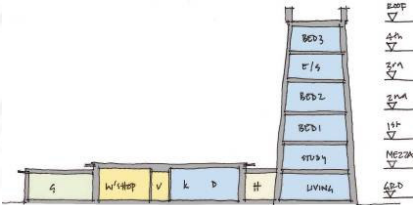
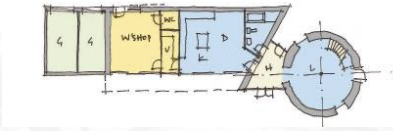


Conservation Mill House



Location: Goole Fields East Yorkshire
Site Size: 5 acres
Client: BCJ Developments
Planning Authority: East Riding Council
Planning Submitted: 9th June 20
Approval Received: August 2008

Description: A grade 2 listed former windmill tower is to be converted into to a 4 bed character live/work dwelling. The new contemporary ground floor extension incorporates many sustainable features including straw bale walls and a sedum grass roof. The wind mill conversion is the 3rd phase of the development, with two dilapidated farm buildings having been successfully refurbished and tastefully converted into a 4 bed house and 3 bed cottage.

Start Date: October 2008
Completion Date: May 2009
Contract value: £300,000

BCJ DEVELOPMENTS
 34 Clogher Road, Hillsborough, Co. Down
 BT26 6PJ